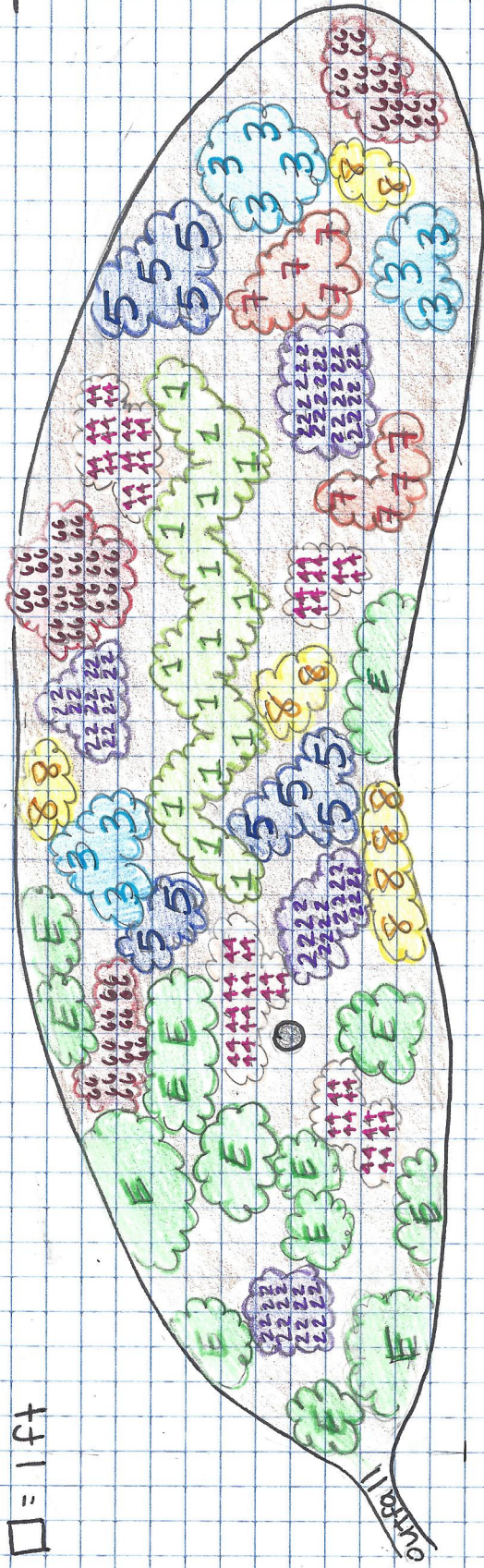


42'

12'



E = existing foliage

O = pipe

1. Carex laxida - Sallow sedge
2. Asclepias incarnata - Swamp milkweed
3. Chelone glabra - White turtle head
4. Eupatorium fistulosum - Joe-Pye Weed
5. Iris versicolor - Blue Flag
6. Lobelia cardinalis - Cardinal flower
7. Liatris spicata - Blazing star
8. Soli dago nemoralis - dwarf goldenrod