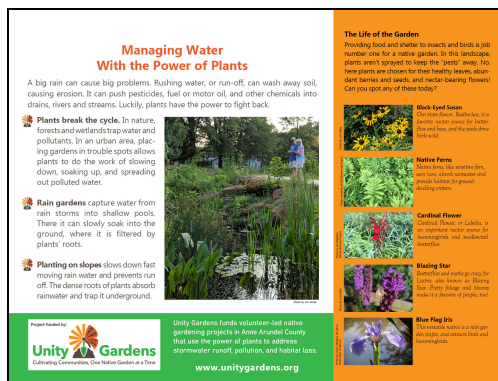




New for Fall 2020: Unity Gardens Signage

We are very excited to share two signs that were created and printed with the help of a special donation. These signs will be offered this fall to Unity Gardens grantees who completed projects in 2020. See below for more information on how the sign program will work this year.



What These signs are 18" x 24" x .5" printed on a high pressure laminate rated to last 10 years outdoors. Your sign kit will include the sign, mounting bracket, a 4 x 4 post, and a bag of cement. This package is worth \$500, but will cost you \$50.

Who can get a sign? All 2020 grant recipients who have completed their projects and submitted final reports are eligible to purchase a sign. There are two designs, and each group can choose one design. Signs are first come, first serve and supplies are limited.

When The signs are being printed now and will arrive in late October. We will open up an order form on Monday, October 19 to give groups as much time as possible to finish their projects and submit reports. Next month, you'll receive an email directing you to the web address for the form where you can purchase with a credit card or Paypal. If necessary, a check will be accepted. You cannot use Unity Garden grant money to purchase the sign.

Where We will be flexible with signage pickup times/locations to make it convenient for everyone. Further details will be provided with your order confirmation.

How You will be responsible for installation, but we'll provide some pointers from someone who has installed a sign like this before.

Why We are so thrilled to be able to share more information about native plants to the community, and we hope you are too!

FAQ's:

Can I buy a second sign? At this time, we cannot offer additional signs for \$50. If your group can purchase one at the full price of \$500, please contact Joni Miller at unitygardensaa@gmail.com for more information.

Can I get a sign for a grant that took place earlier than 2020? Not yet, but we hope to be able to make more signs available in the future.

Can I choose which plants are featured on the sign? Can we add our logo to the sign? No customization is available for the signs. We selected natives common to many native gardens and rain gardens. You may change some plants in your planting plan to include these plants, if you wish.